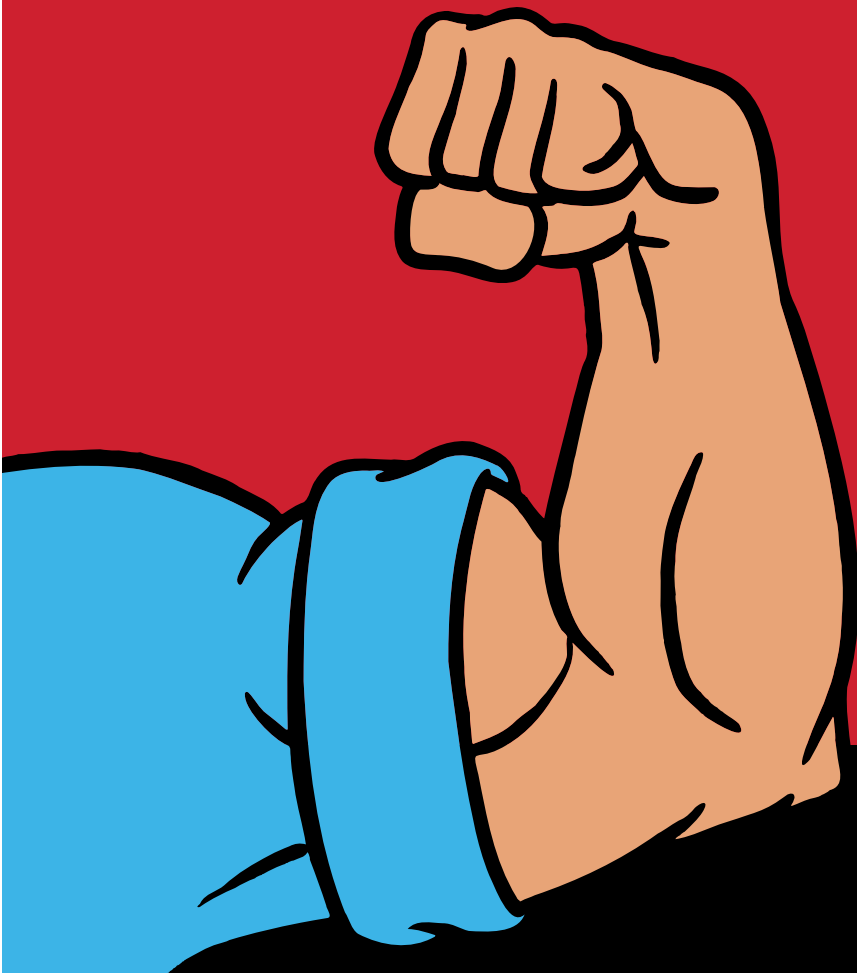




**WORLD'S  
STRONGEST BOND™**

**Product Catalogue**



[www.jbweld.com.au](http://www.jbweld.com.au)



# ABOUT J-B WELD®

## **We Take Pride in Making It. You Take Pride in Using It.**

Ask an avid DIYer, a mechanic, or any repair professional what he has to have in his toolbox, and he's sure to tell you about tried-and-true staples like duct tape, WD-40®, and of course J-B Weld®. For more than 40 years, our products have earned a loyal and enthusiastic following from the people who take pride in their work. They know our products bond strong to a variety of surfaces in even the toughest environments.

## **How It All Began: A Mom and Pop Operation**

The J-B Weld® Company was founded in 1969 by Sam and Mary Bonham. Sam had discovered a need for a “cold weld” product to use in his truck service garage, instead of traditional torch welding. Working with a Texas A&M chemist, he formulated an original “tougher than steel” two-part epoxy and named it J-B Weld™. Sam and Mary soon went from selling the product out of their car to auto parts jobbers across Texas, to selling it in stores throughout the U.S. and internationally.

## **J-B Weld® Today: Building on a Strong Brand**

The latest chapter of the J-B Weld® story began in 2008, when the company was purchased by a group of private investors led by Chip Hanson, who now serves as CEO and president. In just a few years' time, we have broadened the product line to meet the changing needs of our customers, including new adhesives for metal, wood, plastic, and general purpose use. With each new product we innovate — whether epoxy putty sticks, syringe-based epoxy adhesives, threadlockers, or specialty products — we continue to provide the world's strongest bond for your repair projects. We have also expanded our retail partnerships to reach even more customers.

## **Not All Adhesive Bonds Are the Same**

Have you ever thought about how an adhesive works? Or why you should choose one type over another? So often, it's easier just to grab that bottle of glue from your kitchen drawer and hope it will fix whatever needs repair. But once you know the differences, you'll say: Why glue it, when you can J-B Weld™ it. We've created a simple chart to help you compare the different adhesive bonding systems out there. You'll quickly see how the strength of our J-B Weld® two-part epoxy products makes them stand apart from all the rest.

## **Nothing Performs Better Than J-B Weld Epoxies**

J-B Weld™, known as “The Original Cold-Weld™”, was developed as an alternative to traditional torch welding. It's designed to be extremely effective in even the harshest environments. Because it's a two-component (or 2k) epoxy system, it uses reactive chemistry to create the strongest bond possible. Think of it as having a cross-woven pattern that provides extra strength, much like rebar does to reinforce cement structures. And once it sets, it's tougher than steel. All of our epoxy products are based on this same chemistry, making them the best choice for any project you need to tackle. Plus they're extremely easy to use, whether you choose the original twin tubes, the putty sticks, or the syringes.

## **Follow Best Practices for the Best Results**

Every adhesive project requires good preparation to be successful. You can ensure J-B Weld™ will perform to its maximum when you prepare and use it according to the package instructions. You'll also want to prep the area to be repaired. For best results, use a detergent or degreaser to first clean the surface. Then roughen it with a file or coarse sandpaper. This will help create a successful and long-lasting bond.



# OVER 50 YEARS OF STRENGTH.

Whether you have an important home repair, a broken part that's hard to replace or finish off a one of a kind creation or build, J-B Weld has you covered.

We're sold in over 50,000 retail stores, from hardware and automotive to home, farm, craft and more.

Founded in Texas in 1969, J-B Weld is the original 'tougher than steel' cold weld epoxy. But we've grown and innovated to offer a complete, innovative range of strongest in class products to help DIYers and pros of all skill levels confidently pull off projects both big and small from the home, to the garage, and beyond.

J-B Weld, World's Strongest Bond.™



# TWIN TUBES



Our Twin Tubes are what started it all. These two-part epoxies are some of our most versatile products. With a paste-like consistency, Twin Tubes are great at filling gaps and cracks. And once cured, they create a permanent bond and can be sanded, drilled, tapped, shaped and painted.

- OUR ORIGINAL EPOXIES
- BONDING AND GAP FILLING
- MOST VERSATILE



SCAN QR CODE TO WATCH  
OUR HOW TO VIDEOS!





# TWIN TUBES PRODUCT GUIDE



TWIN TUBES	Product Attributes						Metals				Plastics			Other Materials				
	Strength	Set Time	Cure Time	Dry Color	Max Temp	Fuel Resistance	Aluminium	Copper	Iron	Steel	PVC	ABS	Flexible Plastic*	Wood	Stone/Concrete	Fibreglass	Glass	Ceramic
J-B Weld 8265S/8281	5020 PSI	4-6 hrs	15-24 hrs	Dark Grey	287 °C	Best	Better	Best	Best	Best	Good	Good		Better	Best	Better		Better
KwikWeld 8276/8271	3127 PSI	6 min	4-6 hrs	Dark Grey	121 °C	Good	Good	Good	Good	Good	Good	Good		Good	Better	Better		Good
MarineWeld 8272	5020 PSI	4-6 hrs	15-24 hrs	Dark Grey	287 °C	Better	Best	Better	Better	Better	Better	Better		Better	Better	Best		Better
ClearWeld 50240H	3900 PSI	5 min	1 hr	Clear	93 °C		Good	Good	Good	Good	Best	Best	Better	Best	Good	Good	Best	Best

\*Not polypropylene or polyethylene



J-B Weld  
8265S/8281



KwikWeld  
8276/8271



MarineWeld  
8272



ClearWeld  
50240H

# TWIN TUBES



## J-B Weld® 57g

J-B Weld is The Original Cold Weld™ two-part epoxy system that provides strong, lasting adhesion and gap-filling to metal and other surfaces.

**Strength:** 5020 PSI  
**Set time:** 4-6 hours  
**Cure time:** 15-24 hours  
**Cure color:** Dark grey

Part No.	Description
8265S	57g

### Great for:

- All metals
- Stone/Concrete
- Fibreglass

### Top Attributes:

- J-B Weld's strongest epoxy
- 287°C temperature resistance
- Fuel resistant

### Good for:

- Rigid plastic
- Wood
- Ceramic

### Primary Applications:

High-strength repairs and crafts, along with bonding and gap filling on metals, concrete and other surfaces.



## J-B Weld® 283.6g

J-B Weld 283.6g is The Original Cold Weld™ in a pro-size kit.

**Strength:** 5020 PSI  
**Set time:** 4-6 hours  
**Cure time:** 15-24 hours  
**Cure color:** Dark Grey

Part No.	Description
8281	283.6g

### Great for:

- All metals
- Stone/Concrete
- Fibreglass

### Top Attributes:

- J-B Weld's strongest epoxy
- 287°C temperature resistance
- Fuel resistant

### Good for:

- Rigid plastic
- Wood
- Ceramic

### Primary Applications:

High-strength repairs and crafts, along with bonding and gap filling on metals, concrete and other surfaces.



## KwikWeld® 57g

KwikWeld is the fast-setting version of The Original J-B Weld two-part epoxy system.

**Strength:** 3127 PSI  
**Set time:** 6 minutes  
**Cure time:** 4-6 hours  
**Cure color:** Dark grey

Part No.	Description
8276	57g

### Great for:

- Most metals
- Stone/Concrete
- Fibreglass

### Top Attributes:

- Fast 6 min set time
- Strong bond on most surfaces

### Good for:

- Rigid plastic
- Wood
- Ceramic

### Primary Applications:

Fast bonding and gap-filling projects on metal and other substrates.

# TWIN TUBES



## KwikWeld® 283.6g

KwikWeld 283.6g is the fast-setting version of J-B Weld in a pro-size kit.

**Strength:** 3127 PSI

**Set time:** 6 minutes

**Cure time:** 4-6 hours

**Cure color:** Dark grey

Part No.	Description
8271	283.6g

### Great for:

- Most metals
- Stone/Concrete
- Fibreglass

### Top Attributes:

- Fast 6 min set time
- Strong bond on most surfaces

### Good for:

- Rigid plastic
- Wood
- Ceramic

### Primary Applications:

Fast bonding and gap-filling projects on metal and other substrates.



## MarineWeld® 57g

MarineWeld is a specially formulated two-part epoxy system that provides strong, lasting repairs for boats and other marine equipment.

**Strength:** 5020 PSI

**Set time:** 4-6 hours

**Cure time:** 16-24 hours

**Cure color:** Grey

Part No.	Description
8272	57g

### Great for:

- Aluminium
- Other metals
- Fibreglass

### Top Attributes:

- Waterproof
- High bonding strength

### Good for:

- Rigid plastic
- Wood

### Primary Applications:

Repairs on boats, pools, plumbing, and other marine equipment.



## ClearWeld® 2 x 118ml

ClearWeld is a quick-setting epoxy adhesive that cures clear and provides a strong bond to most surfaces.

**Strength:** 3900 PSI

**Set time:** 5 minutes

**Cure time:** 1 hour

**Cure color:** Clear

Part No.	Description
50240H	2 x 118ml

### Great for:

- Glass
- Tile
- Rigid plastic

### Top Attributes:

- Cures clear
- Fast 5 min set time
- High bonding strength

### Good for:

- Ceramic
- Wood
- Most metals

### Primary Applications:

Quick-cure repairs and craft projects, along with bonding on plastic, glass and other surfaces.



# TWIN TUBES USAGE GUIDE

PRODUCTS APPLICATIONS	 <p>J-B Weld Original #8265-S (57g) #8281 (283.6g)</p>	 <p>KwikWeld #8276 (57g) #8271 (283.6g)</p>	 <p>ClearWeld #50240H (2 x 118ml)</p>	 <p>MarineWeld #8272 (57g)</p>
Metal & Steel	X	X	X	X
Iron & Stainless	X	X	X	
Copper & Brass	X			
Aluminium & Bronze	X			
Coated Metals				
Machine Parts	X	X		
Exhaust Systems				
Tail Pipes	X			
Mufflers	X			
Engine Blocks	X			
Machinery	X	X		
High Temp Projects**	X			
Rust Damage	X			
Metal Tanks	X	X		
Metal Fuel Tanks	X			
Stripped Threads	X			
Garden Equip.	X	X	X	
In/Outboard Engines	X	X		X
Thermoset & Carbon Fibre				
Thermoplastics				
Fibreglass	X	X	X	X
Rigid & Semi Flexible Plastic			X	X
ABS, PVC & CPVC Pipes	X	X	X	X
Plastic Fuel Tanks*	X			
Potable Water Tanks				
Auto Trim & Bumpers			X	
Boats & Jetskis				X
Deck & Hull Accessories				X
Plumbing & Drains				X
Crafts			X	X
Toys			X	X
Wood	X	X	X	X
Composites				X
Decks	X	X		
Furniture	X	X		
Doors & Windows				
Trim/Mouldings				
Counter Tops & Cabinets				
Handles & Knobs	X	X		
Knot & Screw Holes				
Insect Damage				
Dry Rot				
Gouges & Cracks				
Concrete	X	X	X	
Ceramic & Tile	X	X	X	
Glass			X	
Rubber				
Carpet				
Vinyl				
Duct Work				
Gap Filler	X	X	X	X
Vinyl Siding			X	

# SYRINGES



J-B Weld Syringes deliver high-strength bonding in an easy-to-use applicator that dispenses the two-part adhesive in a precise 1-to-1 ratio. For convenient mixing, each product comes with a tray and stick. No other tools are necessary. Syringes are ideal for bonding and gap-filling. After curing, they can be sanded and painted.

- HIGH STRENGTH, TWO-COMPONENT ADHESIVES
- PRECISE 1-TO-1 RATIO
- EASY AND CONVENIENT TO MIX



SCAN QR CODE TO WATCH  
OUR HOW TO VIDEOS!



# SYRINGES PRODUCT GUIDE



	Product Attributes						Metals				Plastics				Other Materials			
	Strength	Set Time	Cure Time	Dry Color	Max Temp	Fuel Resistance	Aluminium	Copper	Iron	Steel	PVC	ABS	Flexible Plastic*	Wood	Stone/Concrete	Fiberglass	Glass	Ceramic
<b>SYRINGES</b>																		
ClearWeld 50112/50114	3900 PSI	5 min	1 hour	Clear	121 °C		Better	Better	Better	Better	Better	Better	Better	Better	Better	Good	Best	Better
MinuteWeld 50101	2300 PSI	1 min	1 hour	Clear	121 °C		Good	Good	Good	Good	Good	Good	Good	Good	Better	Good	Good	Good
PlasticWeld 50132	3900 PSI	5 min	1 hour	Clear	121 °C		Good	Good	Good	Good	Best	Best	Better	Good	Better	Good	Better	Good
PlasticBonder 50133/ 50139	3770 PSI	15 min	30 min	Tan/Black	121 °C		Good	Good	Good	Good	Best	Best	Best	Good	Good	Good		Good
WoodWeld 50151	3770 PSI	15 min	30 min	Tan	121 °C		Good	Good	Good	Good	Good	Good	Good	Best	Good	Good		Good
J-B Weld 50165	5020 PSI	4-6 hrs	15-24 hrs	Dark Grey	287 °C	Best	Best	Best	Best	Best	Good	Good		Better	Best	Best		Best
KwikWeld 50176	3127 PSI	6 min	4-6 hrs	Dark Grey	121 °C	Good	Better	Better	Better	Better	Good	Good		Better	Better	Better		Better
MarineWeld 50172	2350 PSI	5 min	1 hour	White	121 °C		Good	Good	Good	Good	Better	Better	Best	Better	Good	Better		Good
HighHeat 50197	4730 PSI	1 Hour	24 hrs (room temp) 1 hr (w/heat)	Dark Grey	287 °C	Better	Better	Better	Better	Better	Good	Good			Better	Better		Better

\*Not polypropylene or polyethylene



ClearWeld  
50112/50114



MinuteWeld  
50101



PlasticWeld  
50132



Tan PlasticBonder  
50133



Black PlasticBonder  
50139



WoodWeld  
50151



J-B Weld  
50165



KwikWeld  
50176



MarineWeld  
50172



HighHeat  
50197

# SYRINGES



## ClearWeld 25ml

ClearWeld is a clear-curing epoxy adhesive that sets quickly and provides strong adhesion.

**Strength:** 3900 PSI

**Set time:** 5 min

**Cure time:** 1 hour

**Cure color:** Clear

Part No.	Description
50112	25ml

### Great for:

- Glass
- Tile
- Rigid plastics

### Top Attributes:

- Cures clear
- High strength
- Quick 5 min set time

### Good for:

- Ceramic
- Wood
- Most metals

### Primary Applications:

Invisible, high-strength bonding applications for repairs, builds, and crafts.



## ClearWeld 14ml

ClearWeld is a clear-curing epoxy that sets quickly and provides strong adhesion. Our 14ml syringe includes a one-time-use mixer for direct adhesive application.

**Strength:** 3900 PSI

**Set time:** 5 min

**Cure time:** 1 hour

**Cure color:** Clear

Part No.	Description
50114	14ml

### Great for:

- Glass
- Tile
- Rigid plastics

### Top Attributes:

- Cures clear
- High strength
- Quick 5 min set time

### Good for:

- Ceramic
- Wood
- Most metals

### Primary Applications:

Invisible, high-strength bonding applications for repairs, builds, and crafts.



## MinuteWeld 25ml

MinuteWeld is a clear-curing epoxy adhesive that sets in 1 minute.

**Strength:** 2300 PSI

**Set time:** 1 minute

**Cure time:** 1 hour

**Cure color:** Clear

Part No.	Description
50101	25ml

### Great for:

- Glass
- Tile
- Ceramic

### Top Attributes:

- Sets in 1 minute
- Cures clear
- No clamping

### Good for:

- Rigid plastics
- Metal
- Stone

### Primary Applications:

Fast-setting bonding & gap-filling applications on many different substrates.

# SYRINGES



## PlasticWeld 25ml

PlasticWeld is a high-strength epoxy adhesive that provides a quick-setting, bond to rigid plastics.

**Strength:** 3900 PSI

**Set time:** 5 min

**Cure time:** 1 hour

**Cure color:** Clear

Part No.	Description
50132	25ml

### Great for:

- PVC
- ABS
- Rigid plastics

### Top Attributes:

- High bond strength
- Cures clear
- Quick 5 min set time

### Good for:

- Glass
- Tile
- Metal

### Primary Applications:

Clear bonding and gap-filling applications on PVC, ABS and other rigid or semi-rigid plastics.



## PlasticBonder Tan 25ml

PlasticBonder is a flexible, strong adhesive that provides long-lasting bonding and gap-filling solutions to most plastics.

**Strength:** 3770 PSI

**Set time:** 15 min

**Cure time:** 30 min

**Cure color:** Tan

Part No.	Description
50133	25ml

### Great for:

- Most flexible or rigid plastics\*

*\*Not polypropylene or polyethylene*

### Top Attributes:

- Flexible
- High strength
- Fast 30 min cure time

### Good for:

- Fibreglass
- Metal
- Wood

### Primary Applications:

Bonding and gap-filling solutions on most plastic substrates.



## PlasticBonder Black 25ml

PlasticBonder is a flexible, strong adhesive that provides long-lasting bonding and gap-filling solutions to most plastics.

**Strength:** 3770 PSI

**Set time:** 15 min

**Cure time:** 30 min

**Cure color:** Black

Part No.	Description
50139	25ml

### Great for:

- Most flexible or rigid plastics\*

*\*Not polypropylene or polyethylene*

### Top Attributes:

- Flexible
- High strength
- Fast 30 min cure time

### Good for:

- Fibreglass
- Metal
- Wood

### Primary Applications:

Bonding and gap-filling solutions on most plastic substrates.



# SYRINGES



## WoodWeld 25ml

WoodWeld is a no-foam adhesive for bonding and repairing exterior or interior wood.

**Strength:** 3770 PSI  
**Set time:** 15 min  
**Cure time:** 30 min  
**Cure color:** Tan

Part No.	Description
50151	25ml

**Great for:**

- All wood surfaces

**Top Attributes:**

- No foam
- Quick setting
- Sandable & paintable

**Good for:**

- Bonding wood to other substrates

**Primary Applications:**

Bonds wood together and to other surfaces.



## J-B Weld® 25ml

J-B Weld is our Original Cold-Weld™ epoxy in an easy-to-use syringe dispenser for strong, lasting adhesion.

**Strength:** 5020 PSI  
**Set time:** 4-6 hours  
**Cure time:** 15-24 hours  
**Cure color:** Dark Grey

Part No.	Description
50165	25ml

**Great for:**

- All metals
- Stone/Concrete
- Fibreglass

**Top Attributes:**

- J-B Weld's strongest epoxy

**Good for:**

- Rigid plastic
- Wood
- Ceramic

**Primary Applications:**

Bonds metal together and to other surfaces with high strength.



## KwikWeld 25ml

KwikWeld is the fast-setting version of J-B Weld in an easy-to-use dispenser.

**Strength:** 3127 PSI  
**Set time:** 6 min  
**Cure time:** 4-6 hours  
**Cure color:** Dark Grey

Part No.	Description
50176	25ml

**Great for:**

- Most metals
- Stone/Concrete
- Fibreglass

**Top Attributes:**

- Fast 6 minute set time
- Strong bond on most surfaces

**Good for:**

- Rigid plastic
- Wood
- Ceramic

**Primary Applications:**

Fast-bonding projects on metal and other substrates.

# SYRINGES



## MarineWeld 25ml

MarineWeld is an adhesive & gap filler that provides waterproof, impact and UV-resistant bonds to fiberglass, most plastics, and other surfaces.

**Strength:** 2350 PSI  
**Set time:** 5 min  
**Cure time:** 1 hour  
**Cure color:** White

Part No.	Description
50172	25ml

### Great for:

- Fibreglass
- Most plastics\*
- Rubber

\*Not polypropylene or polyethylene

### Top Attributes:

- Waterproof
- Flexible
- (Impact/vibration resistant)
- UV-resistant

### Good for:

- Metal
- Stone/Concrete

### Primary Applications:

Bonding and gap-filling applications for marine, pool, kitchen & bath.



## HighHeat 25ml

HighHeat is a heat-resistant epoxy adhesive for bonding and gap-filling substrates exposed to high temperatures.

**Strength:** 4730 PSI  
**Set time:** 1 hour  
**Cure time:** 24 hrs (room temp) 1 hr (with heat)  
**Cure color:** Dark Grey

Part No.	Description
50197	25ml

### Great for:

- Metal
- Stone/Concrete

### Top Attributes:

- 287°C heat resistance
- Fuel resistant
- Cures in an hour with heat

### Good for:

- Fibreglass

### Primary Applications:

Bonding and gap-filling on mufflers, tailpipes, radiators, and other automotive or high-heat repairs.



## Static Mixers

Static Mixers are easy to use attachments for any of the J-B Weld 25ml syringes that allow for precise mixing of our two-component adhesives. Each mixer comes with 16 static elements to ensure complete mixing. The mixer can be cut to allow for larger and easier flow of material. Each mixer should be used within the cure time of each product. Curing will continue for any mixed, but unused portions.

Part No.	Description
50099	2 Pack

# SYRINGES USAGE GUIDE

<div>PRODUCTS</div> <div>APPLICATIONS</div>	 <div>ClearWeld #50112 (25ml) #50114 (14ml)</div>	 <div>J-B Weld Original #50165 (25ml)</div>	 <div>KwikWeld #50176 (25ml)</div>	 <div>Minute Weld #50101 (25ml)</div>
Metal & Steel	X	X	X	
Iron & Stainless	X	X	X	
Copper & Brass		X	X	
Aluminium & Bronze		X	X	
Coated Metals				
Machine Parts		X	X	
Exhaust Systems				
Tail Pipes		X		
Mufflers		X		
Engine Blocks		X		
Machinery		X		
High Temp Projects**		X		
Rust Damage		X	X	
Metal Tanks		X	X	
Metal Fuel Tanks		X		
Stripped Threads				
Garden Equip.	X			
In/Outboard Engines		X		
Thermoset & Carbon Fibre				
Thermoplastics				
Fibreglass	X	X	X	
Rigid & Semi Flexible Plastic	X			X
ABS, PVC & CPVC Pipes	X	X	X	X
Plastic Fuel Tanks*		X		
Potable Water Tanks				
Auto Trim & Bumpers	X			X
Boats & Jetskis				
Deck & Hull Accessories				
Plumbing & Drains				
Crafts	X			X
Toys	X			X
Wood	X	X	X	
Composites				
Decks				
Furniture		X	X	
Doors & Windows				
Trim/Mouldings				
Counter Tops & Cabinets				
Handles & Knobs		X	X	
Knot & Screw Holes				
Insect Damage				
Dry Rot				
Gouges & Cracks				
Concrete	X	X	X	
Ceramic & Tile	X	X	X	X
Glass	X			X
Rubber				X
Carpet				
Vinyl	X			X
Duct Work				
Gap Filler	X	X	X	X
Vinyl Siding	X			X

# SYRINGES USAGE GUIDE

<div>PRODUCTS</div> <div>APPLICATIONS</div>	 <div>WoodWeld #50151 (25ml)</div>	 <div>MarineWeld #50172 (25ml)</div>	 <div>PlasticWeld #50132 (25ml)</div>	 <div>Plastic Bonder #50133 (Tan) (25ml) #50139 (Black) (25ml)</div>
Metal & Steel				
Iron & Stainless				
Copper & Brass				
Aluminium & Bronze				
Coated Metals				X
Machine Parts				
Exhaust Systems				
Tail Pipes				
Mufflers				
Engine Blocks				
Machinery				
High Temp Projects				
Rust Damage				
Metal Tanks				
Metal Fuel Tanks				
Stripped Threads				
Garden Equip.				
In/Outboard Engines		X		
Thermoset & Carbon Fibre				X
Thermoplastics				X
Fibreglass		X	X	X
Rigid & Semi Flexible Plastic		X	X	X
ABS, PVC & CPVC Pipes		X	X	X
Plastic Fuel Tanks*				
Potable Water Tanks				
Auto Trim & Bumpers			X	X
Boats & Jetskis		X	X	X
Deck & Hull Accessories		X	X	X
Plumbing & Drains		X		
Crafts		X	X	
Toys	X	X	X	X
Wood	X			X
Composites	X		X	X
Decks	X			
Furniture	X			
Doors & Windows	X			
Trim/Mouldings	X			
Counter Tops & Cabinets	X			
Handles & Knobs	X			
Knot & Screw Holes	X			
Insect Damage	X			
Dry Rot	X			
Gouges & Cracks	X			
Concrete			X	X
Ceramic & Tile			X	
Glass			X	
Rubber			X	X
Carpet				
Vinyl			X	
Duct Work				
Gap Filler	X	X	X	X
Vinyl Siding			X	

# PUTTY STICKS



J-B Weld Putty Sticks put a lot of strength and versatility right in your hands. Simply mix the putty by hand until the two components are a uniform colour. Then mould, shape or fill the putty into a crack, gap or hole. Once cured, the putty can be sanded, drilled, tapped and painted.

- HAND MIXABLE EPOXY PUTTY
- MOULDS TO FIT AND SHAPE ANYWHERE
- SEALS AND FILLS TO REPAIR CRACKS AND HOLES



SCAN QR CODE TO WATCH  
OUR HOW TO VIDEOS!





# PUTTY STICKS PRODUCT GUIDE



PUTTY STICKS	Product Attributes						Metals				Plastics			Other Materials			
	Strength	Set Time	Cure Time	Dry Color	Max Temp	Fuel Resistance	Aluminium	Copper	Iron	Steel	PVC	ABS	Flexible Plastic*	Wood	Stone/Concrete	Fibreglass	Ceramic
SteelStik 8267	4000 PSI	5 min	1 hour	Grey	176 °C	Better	Best	Best	Best	Best	Good	Good		Good	Best	Better	Good
WaterWeld 8277	4730 PSI	25 min	1 hour	White	93 °C	Good	Better	Better	Better	Better	Best	Best		Better	Better	Best	Better
KwikWood 8257	2450 PSI	15-25 min	1 hour	Tan			Good	Good	Good	Good	Good	Good		Best	Good	Good	Good
PlasticWeld 8237	700 PSI	25 min	4 hours	White	93 °C		Good	Good	Good	Good	Better	Better	Best	Better	Good	Good	Good
HighHeat 8297	4000 PSI	1 hour	8 hours	Grey	260 °C	Better	Better	Better	Better	Better	Good	Good			Better	Better	Best
TankWeld 8217	4000 PSI	5 min	1 hour	Grey	176 °C	Best	Best	Better	Better	Best	Good	Good			Better	Better	Better



SteelStik  
8267



WaterWeld  
8277



KwikWood  
8257



PlasticWeld  
8237



HighHeat  
8297



TankWeld  
8217

# PUTTY STICKS



## SteelStik 57g

SteelStik is a hand-mixable epoxy putty that fills gaps, seals cracks, and provides structural repair on steel and other metal surfaces.

**Strength:** 4000 PSI

**Set time:** 5 min

**Cure time:** 1 hour

**Cure color:** Grey

Part No.	Description
8267	57g

### Great for:

- All metals
- Stone/Concrete

### Good for:

- Fibreglass
- Rigid plastics

### Top Attributes:

- Waterproof up to 500 PSI
- Fuel resistant
- Fast 5 minute set time

### Primary Applications:

Gap-filling, sealing, and structural repairs on plumbing, auto, home and other metal applications.



## WaterWeld 57g

WaterWeld is a waterproof, hand-mixable epoxy putty that seals cracks and repairs pipes and other surfaces exposed to water.

**Strength:** 4730 PSI

**Set time:** 25 min

**Cure time:** 1 hour

**Cure color:** White

Part No.	Description
8277	57g

### Great for:

- Rigid plastic
- Fibreglass

### Good for:

- All metals
- Stone/Concrete

### Top Attributes:

- Waterproof up to 500 PSI
- Cures underwater

### Primary Applications:

Sealing and structural repairs on plumbing, marine, pool, bath/shower, and other applications.



## KwikWood 28g

KwikWood is a hand-mixable epoxy putty for easy wood repair, filling, and sealing.

**Strength:** 2450 PSI

**Set time:** 15-25 min

**Cure time:** 1 hour

**Cure color:** Tan

Part No.	Description
8257	28g

### Great for:

- Wood gap-filling
- Sealing
- Rebuilding

### Good for:

- Wood bonding

### Top Attributes:

- Easy to sand
- Paintable in 1 hour
- Won't shrink or sag

### Primary Applications:

Filling holes and other damage in wood due to rot, insects, or other factors.

# PUTTY STICKS



## PlasticWeld 57g

PlasticWeld is a hand-mixable epoxy putty that fills gaps, seals cracks and provides structural repair on most plastics.

**Strength:** 700 PSI

**Set time:** 25 min

**Cure time:** 4 hours

**Cure color:** White

Part No.	Description
8237	57g

### Great for:

- Most flexible or rigid plastics\*

\*Not polypropylene or polyethylene

### Good for:

- Fibreglass
- Ceramic
- Metal

### Top Attributes:

- Good bond strength to most plastics
- Sandable & paintable

### Primary Applications:

Gap-filling and sealing on most plastic surfaces.



## HighHeat 57g

HighHeat is a heat-resistant, hand-mixable epoxy putty that fills gaps and seals cracks on high-temperature surfaces.

**Strength:** 4000 PSI

**Set time:** 1 hour

**Cure time:** 8 hours

**Cure color:** Grey

Part No.	Description
8297	57g

### Great for:

- Metal
- Stone/Concrete

### Good for:

- Fibreglass
- Ceramic

### Top Attributes:

- 260°C heat resistance
- Fuel resistant

### Primary Applications:

Gap-filling and structural repair on mufflers, tailpipes, and other automotive or high-heat repairs.



## TankWeld 28g

TankWeld is a fuel-resistant hand-mixable epoxy putty that seals and repairs metal tanks.

**Strength:** 4000 PSI

**Set time:** 5 min

**Cure time:** 1 hour

**Cure color:** Grey

Part No.	Description
8217	28g

### Great for:

- Metal

### Good for:

- Fibreglass
- Rigid plastics\*

\*Not polypropylene or polyethylene







### Top Attributes:

- Fuel resistant
- Fast 5 minute set time

### Primary Applications:

Sealing and repairing holes in metal tanks for water, fuel and other chemicals.

# PUTTY STICKS USAGE GUIDE

PRODUCTS APPLICATIONS	 Steel Stik #8267 (57g)	 Water Weld #8277 (57g)	 Plastic Weld #8237 (57g)	 Kwik Wood #8257 (28g)	 High Heat #8297 (57g)	 Tank Weld #8217 (28g)
Metal & Steel	X					X
Iron & Stainless	X	X			X	X
Copper & Brass	X	X				X
Aluminium & Bronze	X	X				X
Coated Metals						
Machine Parts	X				X	
Exhaust Systems	X					
Tail Pipes					X	
Mufflers					X	
Engine Blocks	X				X	
Machinery	X				X	
High Temp Projects					X	
Rust Damage	X					
Metal Tanks	X					X
Metal Fuel Tanks	X					X
Stripped Threads	X					
Garden Equip.	X					X
In/Outboard Engines	X				X	
Thermoset & Carbon Fibre						
Thermoplastics						
Fibreglass		X	X			
Rigid & Semi Flexible Plastic			X			
ABS, PVC & CPVC Pipes			X			
Plastic Fuel Tanks*	X	X				
Potable Water Tanks	X	X				X
Auto Trim & Bumpers			X			
Boats & Jetskis		X	X			
Deck & Hull Accessories		X				
Plumbing & Drains		X				
Crafts	X					
Toys	X		X			
Wood				X		
Composites				X		
Decks				X		
Furniture				X		
Doors & Windows				X		
Trim/Mouldings				X		
Counter Tops & Cabinets				X		
Handles & Knobs				X		
Knot & Screw Holes				X		
Insect Damage				X		
Dry Rot				X		
Gouges & Cracks				X		
Concrete	X	X	X			
Ceramic & Tile			X			
Glass						
Rubber						
Carpet						
Vinyl			X			
Duct Work						
Gap Filler	X	X	X	X	X	X
Vinyl Siding			X			



# SILICONE SEALANTS



J-B Weld Silicone Gasket Makers and Sealants resist high temperatures, oil and water to provide long-lasting solutions for automotive and home repair.

- GASKET MAKERS AND SEALANTS
- GREAT ADHESION AND FLEXIBILITY
- 100% SILICONE – NO SHRINKING



SCAN QR CODE TO WATCH  
OUR HOW TO VIDEOS!





# SILICONES

## PRODUCT GUIDE



SILICONES	Product Attributes			Applications
	Size	Sensor Safe?	Max Temp	
Clear 31310	85g	No	204°C	Sealing and caulking of baths, showers and windows
White 31312	85g	No	204°C	Sealing and caulking of trim, mouldings, sinks, and windows
Hi-Temp Red 31314/31914	85g/300ml	No	343°C	Manifolds, thermostat housing, valve covers
Blue 31316	85g	No	204°C	Oil pans, transmissions, water pumps
Black 31319	85g	No	204°C	Oil pans, interior trim, lens housing
Ultimate Copper 32325	85g	Yes	398°C	Manifolds, thermostat housing, valve covers
Ultimate Grey 32327/32927	85g/280ml	Yes	371°C	Intake manifolds, transmission pans, oil pans
Ultimate Black 32329/32929	85g/280ml	Yes	371°C	Intake manifolds, transmission pans, oil pans



Clear  
31310



White  
31312



Hi-Temp Red  
31314



Blue  
31316



Black  
31319



Ultimate Copper  
32325



Ultimate Grey  
32327



Ultimate Black  
32329



Hi-Temp Red  
31914



Ultimate Grey  
32927



Ultimate Black  
32929

# SILICONES



## Clear 85g

### Top Attributes:

- Waterproof
- No shrinking
- Flexible

### Primary Applications:

- Sealing and caulking of baths, showers and windows

Part No.	Description
31310	85g



## White 85g

### Top Attributes:

- Waterproof
- No shrinking
- Flexible

### Primary Applications:

- Sealing and caulking of trim, mouldings, sinks, and windows

Part No.	Description
31312	85g



## Hi-Temp Red 85g

### Top Attributes:

- High-temperature resistant up to 343 °C

### Primary Applications:

- Manifolds
- Thermostat housing
- Valve covers

Part No.	Description
31314	85g



## Hi-Temp Red 300ml

### Top Attributes:

- High-temperature resistant up to 343 °C

### Primary Applications:

- Manifolds
- Thermostat housing
- Valve covers

Part No.	Description
31914	300ml

# SILICONES



## Blue 85g

### Top Attributes:

- Waterproof
- No shrinking
- Flexible

### Primary Applications:

- Oil pans
- Transmissions
- Water pumps

Part No.	Description
31316	85g



## Black 85g

### Top Attributes:

- High flexibility
- Waterproof
- Temperature Resistant up to 204 °C

### Primary Applications:

- Oil pans
- Interior Trim
- Lens housing

Part No.	Description
31319	85g



## Ultimate Copper 85g

### Top Attributes:

- High-temperature resistant up to 398°C
- Sensor safe

### Primary Applications:

- Manifolds
- Thermostat housing
- Valve covers

Part No.	Description
32325	85g



## Ultimate Grey 85g

### Top Attributes:

- High-torque load applications
- High-temperature resistant up to 371°C
- Sensor safe

### Primary Applications:

- Intake manifolds
- Transmission pans
- Oil pans

Part No.	Description
32327	85g

# SILICONES



## Ultimate Grey 280ml

### Top Attributes:

- High-torque load applications
- High-temperature resistant up to 371°C
- Sensor safe

### Primary Applications:

- Intake manifolds
- Transmission pans
- Oil pans

Part No.	Description
32927	280ml



## Ultimate Black 85g

### Top Attributes:

- Maximum oil resistance
- High flexibility
- Sensor safe

### Primary Applications:

- Oil pans,
- Valve covers
- Transmission Pans

Part No.	Description
32329	85g



## Ultimate Black 280ml

### Top Attributes:




- Maximum oil resistance
- High flexibility
- Sensor safe

### Primary Applications:

- Oil pans
- Valve covers
- Transmission pans




Part No.	Description
32929	280ml

# SILICONES USAGE GUIDE



PRODUCTS  FEATURES BENEFITS APPLICATIONS	 Ultimate Grey #32927 (280ml) #32327 (85g)		 Ultimate Black #32929 (280ml) #32329 (85g)		 High Temp Red #31914 (300ml) #31314 (85g)	
Oxmine	X		X			
Acetoxy					X	
Sensor Safe	X		X			
Set Time (Hrs)	1		1		1	
Cure Time (Hrs)	24		24		24	
Temp Resistant to	371°C		371°C		343°C	
Low Odour	X		X			
High Torque Load	X					
Oil Resistant	X		X		X	
Intake Manifolds	X					
Exhaust Manifolds					X	
Transmission Pans	X		X			
Oil Pans	X		X		X	
Timing Gear Covers	X		X		X	
Cam Covers	X					
Valve Covers			X		X	
Water Pumps	X				X	
Diff Covers					X	
Thermostat Housing						
Drive Housing					X	
Windscreens						
Weather Stripping						
General Household						
Oven Doors					X	
Bath/Shower/Sink						
Windows/Glass						
Aquariums						
Interior Trim/Moulding						
Door Frames						
Lens Housing						



# SILICONES USAGE GUIDE

PRODUCTS  FEATURES BENEFITS APPLICATIONS			
	 Black RTV #31319 (85g)	 Clear RTV #31310 (85g)	 White RTV #31312 (85g)
Oxmine			
Acetoxy	X	X	X
Sensor Safe			
Set Time (Hrs)	1	1	1
Cure Time (Hrs)	24	24	24
Temp Resistant to			
Low Odour			
High Torque Load			
Oil Resistant			
Intake Manifolds			
Exhaust Manifolds			
Transmission Pans			
Oil Pans			
Timing Gear Covers			
Cam Covers			
Valve Covers			
Water Pumps			
Diff Covers			
Thermostat Housing			
Drive Housing			
Windscreens	X		
Weather Stripping	X	X	
General Household		X	X
Oven Doors			
Bath/Shower/Sink		X	X
Windows/Glass	X	X	X
Aquariums		X	
Interior Trim/Moulding	X		X
Door Frames	X	X	X
Lens Housing	X	X	

# SILICONES USAGE GUIDE

PRODUCTS  FEATURES BENEFITS APPLICATIONS	 Blue RTV #31316 (85g)		 Ultimate Copper RTV #32325 (85g)	
Oxmine			X	
Acetox	X			
Sensor Safe			X	
Set Time (Hrs)	1		1	
Cure Time (Hrs)	24		24	
Temp Resistant to			398°C	
Low Odour			X	
High Torque Load				
Oil Resistant	X		X	
Intake Manifolds				
Exhaust Manifolds			X	
Transmission Pans	X			
Oil Pans	X		X	
Timing Gear Covers	X		X	
Cam Covers				
Valve Covers	X		X	
Water Pumps	X			
Diff Covers	X		X	
Thermostat Housing	X		X	
Drive Housing				
Windscreens				
Weather Stripping				
General Household				
Oven Doors			X	
Bath/Shower/Sink				
Windows/Glass				
Aquariums				
Interior Trim/Moulding				
Door Frames				
Lens Housing				

# SUPERWELD



J-B Weld's SuperWeld line offers innovative high-strength super glues. They're easy to use, set quickly and are ideal for instant-bonding on crafts, home and auto repairs and more.

- HIGH STRENGTH SUPER GLUES
- VERSATILE QUICK-BONDING SOLUTIONS



SCAN QR CODE TO WATCH  
OUR HOW TO VIDEOS!



# SUPERWELD PRODUCT GUIDE



SUPERWELD	Product Attributes			Top benefits	
	Size	Strength	Set Time		
	SuperWeld Professional Grade 33120	20g	3500 PSI	10 sec	Highest strength
	SuperWeld Extreme 33400	15g	3000 PSI	30 sec	Thick gel, highest flexibility, impact resistance, and control
	SuperWeld Brush-On 33106	6g	3100 PSI	10 sec	Brush-on for clean, controlled applications
	SuperWeld 2-Pack 33102	2 x 2g	700 PSI	25 min	Low cost “value pack” of two units



SuperWeld Professional Grade  
33120



SuperWeld Extreme  
33400



SuperWeld Brush-On  
33106



SuperWeld 2-Pack  
33102

# SUPERWELD



## SuperWeld Professional Grade 20g

SuperWeld Professional Grade is our strongest super glue that provides an instant bond in just seconds.

**Strength:** 3500 PSI

**Set time:** 10 sec

**Cure time:** 24 hours

### Great for:

- All metals
- Stone/Concrete
- Fibreglass

### Top Attributes:

- Strongest super glue
- 10 second set time

### Good for:

- Rigid plastics
- Glass
- Wood

### Primary Applications:

High-strength, quick bonding for repairs and projects on most surfaces.

Part No.	Description
33120	20 g



## SuperWeld Extreme 15g

SuperWeld Extreme is a super glue gel that is specially-formulated to provide a flexible, impact-resistant bond in seconds.

**Strength:** 3000 PSI

**Set time:** 30 sec

**Cure time:** 24 hours

### Great for:

- Most plastics
- Rubber
- Leather

### Top Attributes:

- Flexible, impact-resistant bond
- No-drip gel formula for maximum control

### Good for:

- All metals
- Stone/concrete
- Wood

### Primary Applications:

Bonding applications for repair and crafts that require flexibility, impact-resistance, or need to be applied on vertical surfaces.

Part No.	Description
33400	15g



## SuperWeld Brush-On 6g

SuperWeld Brush-On delivers a strong bond in just seconds and includes a handy brush for even application on surfaces.

**Strength:** 3100 PSI

**Set time:** 10 sec

**Cure time:** 24 hours

### Great for:

- Rigid Plastics
- Metal

### Top Attributes:

- Brush included for no-mess, controlled applications

### Good for:

- Glass
- Wood
- Stone/Concrete

### Primary Applications:

Clean, controlled glue applications for craft projects or repairs, especially in tight spaces.

Part No.	Description
33106	6g



# SUPERWELD



## SuperWeld 2-Pack 2 x 2g

SuperWeld is a super glue formulated for high strength that bonds instantly.

**Strength:** 700 PSI

**Set time:** 25 min

**Cure time:** 4 hours

### Great for:

- Rigid Plastics
- Metal

### Top Attributes:

- 2-pack super glue tubes

### Good for:





- Glass
- Wood
- Stone/Concrete

### Primary Applications:

Quick-bonding for repairs and projects on most surfaces.

Part No.	Description
33102	2 x 2g

## SUPERWELD USAGE GUIDE

PRODUCTS  FEATURES BENEFITS APPLICATIONS				
	 SuperWeld Tubes 2 pack 2g #33102 (4g)	 SuperWeld Brush On #33106 (6g)	 SuperWeld Extreme #33400 (15g)	 SuperWeld Large Bottle #33120 (20g)
Metal	X	X	X	X
Plastic	X	X	X	X
Wood	X	X	X	X
Concrete				
Ceramics	X	X	X	X
Fibreglass				
Aluminium				
Glass	X	X	X	X
Rubber	X	X	X	X
Cloth		X	X	X
Leather	X	X	X	X
Household	X	X	X	X
Automotive	X	X	X	X
Rear View Mirrors		X		
Craft	X	X	X	X

**NOTE:** This is a "General Use" guide only. Some products may or may not be suitable for other listed purposes. Please trial at your own discretion.

# FIBERWELD REPAIR CASTS



J-B Weld FiberWeld repair casts combine high-strength fiberglass wraps with adhesive for quick-curing repairs or structural reinforcement. They're easy to apply, just dip in water and wrap around the damaged area and secure. After curing, the wraps can be sanded and painted.

- EASY TO USE: JUST WET IT AND WRAP IT
- HIGH STRENGTH FOR STRUCTURAL REPAIRS AND SEALING
- CAN PAINT AND SAND



SCAN QR CODE TO WATCH  
OUR HOW TO VIDEOS!



# FIBERWELD REPAIR CASTS

## PRODUCT GUIDE



FIBERWELD REPAIR CASTS	Product Attributes		Repair and Reinforce Applications
	Length	Cure Color	
	5cm x 91cm	Black	
	5cm x 91cm	Black	
	2.5cm x 121cm	White	
	5cm x 121cm	White	
FiberWeld Permanent Repair Cast 38236			Tool handles, furniture, yard equipment, sporting & camping gear
FiberWeld Automotive Repair Cast 38237			Radiator hoses, tailpipes/mufflers, oil & transmission lines
FiberWeld 1" Pipe Repair Cast 38248			Plumbing pipes up to 2.5cm diameter
FiberWeld 2" Pipe Repair Cast 38260			Plumbing pipes up to 5cm diameter



FiberWeld Permanent Repair Cast  
38236



FiberWeld Automotive Repair Cast  
38237



FiberWeld 1" Pipe Repair Cast  
38248



FiberWeld 2" Pipe Repair Cast  
38260

# FIBERWELD REPAIR CASTS



## FiberWeld Permanent Repair Cast 5cm x 91cm

FiberWeld Permanent Repair Cast is a high-strength fibreglass wrap, permeated with a specially-formulated resin that hardens like steel in 15 minutes.

**Strength:** 1500 PSI

**Set time:** 15 min

**Cure time:** 1 hour

### Great for:

- Wood
- Metal
- Fibreglass

### Top Attributes:

- Works like a cast – just wet and wrap
- Cures in 15 minutes
- Sandable & paintable

### Good for:

- Rubber
- Rigid plastics

### Primary Applications:

Structural repairs and reinforcement on furniture, tool handles, sporting equipment, and more.

Part No.	Description
38236	5cm x 91cm



## FiberWeld Automotive Repair Cast 5cm x 91cm

FiberWeld Automotive Repair Wrap is a fibreglass wrap that hardens like steel in 15 minutes for temperature and water-resistant automotive repairs.

**Strength:** 1500 PSI

**Set time:** 15 min

**Cure time:** 1 hour

### Great for:

- Metal
- Rubber
- Rigid plastics

### Top Attributes:

- Works like a cast – just wet and wrap
- 204°C heat resistance
- 100 PSI water resistance

### Good for:

- Fibreglass

### Primary Applications:

Repairing and sealing radiator hoses, tailpipes, mufflers, and other auto/RV emergency repairs.

Part No.	Description
38237	5cm x 91cm



## FiberWeld 1" Pipe Repair Cast 2.5cm x 121cm

FiberWeld 1" Pipe Repair Cast is a high-strength fibreglass wrap, permeated with a specially-formulated resin to repair pipes up to 2.5cm in diameter.

**Strength:** 1500 PSI

**Set time:** 15 min

**Cure time:** 1 hour

### Great for:

- PVC
- Copper
- Steel

### Top Attributes:

- Works like a cast – just wet and wrap
- Holds water pressure up to 500 PSI
- Anti-corrosive

### Good for:

- Cast iron
- ABS

### Primary Applications:

Repair and reinforcement for pipes up to 1" diameter.

Part No.	Description
38248	2.5cm x 121cm

# FIBERWELD REPAIR CASTS



## FiberWeld 2" Pipe Repair Cast 5cm x 152cm

FiberWeld 2" Pipe Repair Cast is a high-strength fibreglass wrap, permeated with a specially-formulated resin to repair pipes up to 5cm in diameter.

**Strength:** 1500 PSI

**Set time:** 15 min

**Cure time:** 1 hour

### Great for:

- PVC
- Copper
- Steel

### Top Attributes:

- Works like a cast – just wet and wrap
- Holds water pressure up to 500 PSI
- Anti-corrosive

### Good for:

- Cast iron
- ABS

### Primary Applications:

Repair and reinforcement for pipes up to 5cm diameter.

Part No.	Description
38260	5cm x 152cm



# EXHAUST REPAIR



J-B Weld Exhaust Repair pastes and adhesives are designed to seal and structurally repair almost any part of your vehicle's exhaust system. These products are specially-formulated to withstand extremely high temperatures.

- RESIST HIGH TEMPERATURES
- PASTES FOR SEALING
- ADHESIVES FOR REPAIRING



SCAN QR CODE TO WATCH  
OUR HOW TO VIDEOS!



# EXHAUST REPAIR

## PRODUCT GUIDE



	Product Attributes				Application	Use on
	Type	Size	Max Temp	Cure Time		
<b>EXHAUST REPAIR</b>						
<b>Tiger Patch Kit</b> 39205	Wrap	5cm x 91cm	315°C	20 min (with heat)	High strength sealing and insulation	Mufflers and Tailpipes
<b>Tiger Patch</b> 39206	Wrap	5cm x 91cm	315°C	20 min (with heat)	High strength sealing and insulation	Mufflers and Tailpipes
<b>ExhaustWeld</b> 38572	Wrap	5cm x 182cm	593°C	2 hours (no heat), 20 min (with heat)	High strength repairs, sealing and insulation on breaks, holes and cracks	Anywhere on exhaust system
<b>ExtremeHeat</b> 37901	Paste	85g	538°C	20 min (with heat)	Sealing cracks, apply in thin layers	Anywhere on exhaust system
<b>Exhaust System Sealant</b> 37903	Paste	85g	454°C	20 min (with heat)	Gap filling and seam/connector	From tailpipe to catalytic converter
<b>MufflerSeal</b> 37906/37912	Paste	170g/340g	454°C	20 min (with heat)	Sealing cracks	Mufflers and Tailpipes



Tiger Patch Kit  
39205



Tiger Patch  
39206



ExhaustWeld  
38572



ExtremeHeat  
37901



Exhaust System Sealant  
37903



MufflerSeal  
37906



MufflerSeal  
37912

# EXHAUST REPAIR



## Tiger patch Kit 5cm x 91cm

J-B Weld Tiger patch Kit is a temperature-resistant epoxy combined with a fibreglass wrap that cures with heat to permanently patch holes and cracks in mufflers and tailpipes. The kit includes aluminium tape for sealing and securing.

**Temp resistance:** 315°C

**Set time:** N/A

**Cure time:** 20 minutes (with heat)

### Use on:

- Mufflers and tailpipes

### Primary Applications:

- Sealing holes and cracks

Part No.	Description
39205	5cm x 91cm



## Tiger patch 5cm x 91cm

J-B Weld Tiger patch is a temperature-resistant epoxy combined with a fibreglass wrap that cures with heat to permanently patch holes and cracks in mufflers and tailpipes.

**Temp resistance:** 315°C

**Set time:** N/A

**Cure time:** 20 minutes (with heat)

### Use on:

- Mufflers and tailpipes

### Primary Applications:

- High-strength sealing and insulation

Part No.	Description
39206	5cm x 91cm



## ExhaustWeld 5cm x 182cm

ExhaustWeld is a high-strength fibreglass wrap containing a specially formulated resin to help it withstand high temperatures anywhere on the exhaust system.

**Temp resistance:** 593°C

**Set time:** N/A

**Cure time:** 2 hours (no heat), 20 minutes (with heat)

### Use on:

- Any part of exhaust pipe

### Primary Applications:

- High-strength repairs, sealing and insulation on breaks, holes and cracks

Part No.	Description
38572	5cm x 182cm

# EXHAUST REPAIR



## ExtremeHeat 85g

ExtremeHeat is a steel-reinforced paste formulated to seal cracks on metal in high-temperature environments.

**Temp resistance:** 538°C

**Set time:** 1 hour

**Cure time:** 24 hours

**Use on:**

- Any part of exhaust pipe

**Primary Applications:**

- Sealing cracks
- Apply in thin layers

Part No.	Description
37901	85g



## Exhaust System Sealant 85g

Exhaust System Sealant is a heat-resistant paste that seals and fills gaps on exhaust systems and pipe connections.

**Temp resistance:** 454°C

**Set time:** 30 min

**Cure time:** 2 hours

**Use on:**

- From tailpipe to catalytic converter

**Primary Applications:**

- Gap-filling and seam/connector sealing

Part No.	Description
37903	85g



## MufflerSeal 170g

MufflerSeal is a sealing paste formulated to resist heat on mufflers and tailpipes.

**Temp resistance:** 454°C

**Set time:** 30 min

**Cure time:** 2 hours

**Use on:**

- Mufflers and tailpipes

**Primary Applications:**

- Sealing cracks

Part No.	Description
37906	170g



# EXHAUST REPAIR



## MufflerSeal 340g

MufflerSeal is a sealing paste formulated to resist heat on mufflers and tailpipes.

Temp resistance:	454°C
Set time:	30 min
Cure time:	2 hours

**Use on:**

- Mufflers and tailpipes

**Primary Applications:**

- Sealing cracks

Part No.	Description
37912	340g



# THREAD LOCKERS



J-B Weld Threadlockers provide a reliable and superior lock and seal for threaded fasteners on all mechanical parts, body assemblies, and hundreds of other applications to prevent loosening of fasteners from shock and vibration.

- WORKS ON SCREWS, BOLTS, AND MORE, BETWEEN 0.6CM AND 2.5CM LONG
- NO SPILLS, DRIPS OR CLOGS
- HEAT RESISTANT UP TO 148°C



SCAN QR CODE TO WATCH  
OUR HOW TO VIDEOS!

# THREADLOCKERS PRODUCT GUIDE



THREADLOCKERS	Size	Application
Perma-Lock Medium Strength Blue 24206 / 24213 / 24236	6 ml / 13ml / 36ml	Adhesive that locks and seals threaded fasteners, but allows for easy hand-disassembly
Perma-Lock High Strength Red 27106 / 27113 / 27136	6 ml / 13ml / 36ml	Adhesive that locks and seals threaded fasteners that require resistance to severe shock and vibrations



Perma-Lock Medium Strength Blue  
24206 / 24213 / 24236

Perma-Lock High Strength Red  
27106 / 27113 / 27136

# THREADLOCKERS



## Perma-Lock Medium Strength Blue 6ml

### Applications:

- Adhesive that locks and seals threaded fasteners, but allows for easy hand-disassembly.

Part No.	Description
24206	6ml



## Perma-Lock Medium Strength Blue 13ml

### Applications:

- Adhesive that locks and seals threaded fasteners, but allows for easy hand-disassembly.

Part No.	Description
24213	13ml



## Perma-Lock Medium Strength Blue 36ml

### Applications:

- Adhesive that locks and seals threaded fasteners, but allows for easy hand-disassembly.

Part No.	Description
24236	36ml

# THREADLOCKERS



## Perma-Lock High Strength Red 6ml

### Applications:

- High-strength adhesive that permanently locks and seals threaded fasteners. High resistance to severe shock and vibrations. Requires special tools for disassembly.

Part No.	Description
27106	6ml



## Perma-Lock High Strength Red 13ml

### Applications:

- High-strength adhesive that permanently locks and seals threaded fasteners. High resistance to severe shock and vibrations. Requires special tools for disassembly.

Part No.	Description
27113	13ml



## Perma-Lock High Strength Red 36ml

### Applications:

- High-strength adhesive that permanently locks and seals threaded fasteners. High resistance to severe shock and vibrations. Requires special tools for disassembly.

Part No.	Description
27136	36ml



# SPECIALTY PRODUCTS



J-B Weld Specialty Repair products are designed to handle very specific fixes, from ripped leather to leaking radiators.

- APPLICATION SPECIFIC REPAIR KITS AND PRODUCTS
- ALL TOOLS INCLUDED
- SAVES TIME AND MONEY



SCAN QR CODE TO WATCH  
OUR HOW TO VIDEOS!





# SPECIALTY PRODUCT GUIDE



SPECIALTY PRODUCTS	Contents	Primary Applications
Windshield Repair Kit 2100	Repair Resin, Syringe, Applicator, Prep Items	Repairing windshield damage up to 3.1cm diameter
TankWeld Repair Kit 2110	28g Epoxy Adhesive • 5cm x 15cm Fibreglass Reinforcing • Applicator	Repairing cracks and holes up to 10cm in length or 0.6cm in diameter on metal & aluminium fuel tanks, plastic storage tanks, water tanks, and oil pans
Radiator Repair Kit 2120	28g Epoxy Adhesive • 5cm x 15cm Fibreglass Reinforcing Cloth • Applicator	Repairs and stops leaks on radiators made from aluminium, copper-brass, and most plastics
LeatherWeld Repair Kit 2130	85g Adhesive Paste • Fabric Backing • Colours for Matching • Applicator & Texturizer	Repair tears, rips or holes up to 5cm long or 0.6cm wide on auto seats, car interior, furniture, clothing, boats and more
MirrorWeld 33701	Adhesive and Accelerator	Bonding rear view mirrors to windshields
Valve Grinder 37801	42g Valve Grinding Compound	Grinding and lapping compound that removes burrs, defects, and corrosion on valve faces and seats



Windshield Saver Repair Kit  
2100



TankWeld Repair Kit  
2110



RadiatorWeld Repair Kit  
2120



LeatherWeld Repair Kit  
2130



MirrorWeld  
33701



Valve Grinder  
37801



Metal Strapping Kit  
37990

# SPECIALTY



## Windshield Saver Repair Kit

### Contents:

- Repair Resin
- Syringe
- Applicator
- Prep Items

Part No.

2100

### Top Attributes:

- UV-cure repair system
- Prevents further spreading
- Repairs and minimises damage

### Primary Applications:

- Repairing windshield damage up to 3.1cm diameter.



## TankWeld Repair Kit

### Contents:

- 28g Epoxy Adhesive
- 5cm x 15cm Fibreglass Reinforcing Cloth
- Applicator

Part No.

2110

### Top Attributes:

- 3100 PSI strength
- 121°C heat resistance
- Sets in 5 minutes

### Primary Applications:

- Repairing cracks and holes up to 10cm in length or 0.6cm in diameter on metal & aluminium gas tanks, plastic storage tanks, water tanks, and oil pans.



## RadiatorWeld Repair Kit

### Contents:

- 28g Epoxy Adhesive
- 5cm x 15cm Fibreglass Reinforcing Cloth
- Applicator

Part No.

2120

### Top Attributes:

- Chemical resistant
- 121°C heat resistance
- 3100 PSI strength

### Primary Applications:

- Repairs and stops leaks on radiators made from aluminium, copper-brass, and most plastics.



## LeatherWeld Repair Kit

### Contents:

- 85g Adhesive Paste
- Fabric Backing
- Colors for Matching
- Applicator & Texturiser

Part No.

2130

### Top Attributes:

- No heat cure or heat tools required
- Mix to match any colour

### Primary Applications:

- Repair tears, rips or holes up to 5cm long or 0.6cm wide on auto seats, car interior, furniture, clothing, boats and more.

# SPECIALTY



## MirrorWeld

### Contents:

- Adhesive and Accelerator

### Part No.

33701

### Top Attributes:

- 3000 PSI strength
- 1 Hour cure
- Resists impact, moisture, humidity, heat and vibration

### Primary Applications:

- Bonding rearview mirrors to windshields.



## Valve Grinder

### Contents:

- 42g Valve Grinding Compound

### Part No.

37801

### Top Attributes:

- Auto-adjust grit for fine, smooth finish

### Primary Applications:

- Grinding and lapping compound that removes burrs, defects, and corrosion on valve faces and seats.



## Metal Strapping Kit

### Contents:

- 1.9cm x 152cm Metal Strap
- 2 Nuts and Bolts

### Part No.

37990

### Primary Applications:

- Hanging and clamping exhaust pipes, mufflers, plumbing pipes, gutters and downspouts.



## Essential Travel Pack

### Contents:

- 1 x 57g SteelStik
- 1 x 57g WaterWeld
- 1 x 57g PlasticWeld
- 1 x 57g KwikWeld
- 1 x 2g SuperWeld

### Part No.

JBWETP

The J-B Weld essential travel pack provides a solution and repair option for emergency situations. Small enough to fit in the glove box or tool box, the kit contains Steelstik, Waterweld, Plasticweld, Kwikweld and SuperWeld. Ideal for caravanners, 4WD enthusiasts, motor cyclists, agricultural and marine, it provides repair options to get you back heading for the destination of your choice.



SteelStik  
8267



WaterWeld  
8277



PlasticWeld  
8237



KwikWeld  
8276



SuperWeld  
33102

# MERCHANDISERS



## SteelStik Counter Display

### Contents:

- 20 x 57g SteelStiks
- Clear plastic counter top dispenser

**Strength:** 4000 PSI

**Set time:** 5 min

**Cure time:** 1 hour

**Cure color:** Grey

### SteelStik:

SteelStik is a hand-mixable epoxy putty that fills gaps, seals cracks, and provides structural repair on steel and other metal surfaces.

Part No.	Description
8267G-D20	115mm(W) x 140mm(D) x 270mm(H)
8267D-R1-10	Refill (quantity of 10)



## SteelStik & WaterWeld Counter Display

### Contents:

- 10 x 57g SteelStik
- 10 x 57g WaterWeld
- Clear plastic counter top dispenser

**SteelStik** is a hand-mixable epoxy putty that fills gaps, seals cracks, and provides structural repair on steel and other metal surfaces.

**WaterWeld** is a waterproof, hand-mixable epoxy putty that seals cracks and repairs pipes and other surfaces exposed to water.

Part No.	Description
8267-77G-20	115mm(W) x 140mm(D) x 270mm(H)



# MERCHANDISERS

## J-B Weld Rotating Floor Stand

Dimensions Approx: 700mm x 1900mm

### Contents:

Qty	Part No.	Description	Size
<b>Specialty Products</b>			
4	2100	Windshield Saver Repair Kit	Kit
2	2110	TankWeld Repair Kit	Kit
2	2120	RadiatorWeld Repair Kit	Kit
2	2130	LeatherWeld Repair Kit	Kit
3	33701	MirrorWeld	0.6ml
<b>Twin Tubes</b>			
5	8265-S	J-B Weld Original	57g
3	8212	ClearWeld Twin Tube	57g
5	8276	KwikWeld	57g
<b>Putty Sticks</b>			
3	8237	PlasticWeld	57g
3	8267	SteelStik	57g
3	8277	WaterWeld	57g
3	8297	HighHeat	57g
<b>Threadlockers</b>			
3	24206	Perma-Lock Medium Strength Blue	6ml
2	24213	Perma-Lock Medium Strength Blue	13ml
2	24236	Perma-Lock Medium Strength Blue	36ml
3	27106	Perma-Lock High Strength Red	6ml
2	27113	Perma-Lock High Strength Red	13ml
2	27136	Perma-Lock High Strength Red	36ml
<b>Silicone Sealants</b>			
3	31310	Clear	85g
3	31312	White	85g
5	31314	Hi Temp Red	85g
5	31316	Blue	85g
3	31319	Black	85g
5	32327	Ultimate Grey	85g
5	32329	Ultimate Black	85g
<b>SuperWeld</b>			
3	33102	SuperWeld 2 pack (2g ea)	4g
3	33106	SuperWeld Brushable	6g
3	33120	SuperWeld	20g
3	33400	SuperWeld Extreme	15g
<b>Exhaust Repair</b>			
3	37903	Exhaust System Sealant	85g
3	37906	MufflerSeal	170g
3	37912	MufflerSeal	340g
2	39206	Tiger Patch	5cm x 91cm
2	38553	Ultra Heat Wrap	Kit
2	39205	Muffler Patch	Kit
<b>FiberWeld Repair Casts</b>			
2	38237	FiberWeld Automotive Repair Cast	Kit
2	38248	FiberWeld 1" Pipe Repair Cast	Kit
2	38236	FiberWeld Permanent Repair Cast	Kit
<b>Syringes</b>			
3	50165	J-B Weld Original	25ml
3	50101	MinuteWeld	25ml
3	50112	ClearWeld	25ml
3	50132	PlasticWeld	25ml
3	50139	Plastic Bonder Black	25ml
3	50133	Plastic Bonder Tan	25ml
3	50151	WoodWeld	25ml
3	50172	MarineWeld	25ml
3	50176	KwikWeld	25ml
3	50099	Static Mixers - for 25ml Syringes	2 Pack





# HERCULINER



Herculiner is the strongest name in DIY truck bed liner coatings, and offers a complete range of solutions for bed liner needs. Herculiner's bed liner coatings provide the most durable, textured protection in easy-to-use roll-on, spray-on, or aerosol applications. Herculiner coatings can be applied to many different types of surfaces, such as plastic, wood, fiberglass, metal or concrete. There's even a solution to restore the original color and shine of the bed liner. From protection to restoration, Herculiner Takes on Anything.

- MOST DURABLE, TEXTURED DIY BED LINER COATINGS
- ROLL-ON, SPRAY-ON, & AEROSOL SOLUTIONS
- FROM PROTECTION TO RESTORATION



SCAN QR CODE TO WATCH  
OUR HOW TO VIDEOS!



# HERCULINER



## Herculiner Original Roll-On Bed Liner Kit

### Top Attributes:

- High scratch, impact, chemical & water resistance
- Great adhesion to steel or aluminium truck beds
- Heavy textured skid resistance

### Part No.

HCL1B8

### Coverage

- The kit covers (1) 1.8m truck bed  
(Add 946ml can for 2.4m truck bed)
- Covers 5 - 5.5m<sup>2</sup>

### Contents:

- One 3.78L Can of Herculiner ready-to-use protective coating
- Application brush for tight spots and corners
- Two rollers for easy/even application
- One roller handle



## Herculiner Original Roll-On 3.78L Can

### Top Attributes:

- High scratch, impact, chemical & water resistance
- Great adhesion to steel or aluminium truck beds
- Heavy textured skid resistance

### Part No.

HCL1B3

### Coverage

- Covers (1) 1.8m truck bed  
(Add 946ml can for 2.4m truck bed)
- Covers 5 - 5.5m<sup>2</sup>



## Herculiner Original Roll-On 946mL Can

### Top Attributes:

- High scratch, impact, chemical & water resistance
- Great adhesion to steel or aluminium truck beds
- Heavy textured skid resistance

### Part No.

HCL1B7

### Coverage

- Covers 1 - 1.8m<sup>2</sup>

# HERCULINER



## Herculiner Truck Bed Coating Aerosol Can

### Primary Applications:

- Great for touch-ups, cutting in before applying roll-on Herculiner, or protecting hard-to-reach areas like undercoatings and wheel wells.

### Part No.

HALB15

### Contents:

- 425g Herculiner Truck Bed Coating



## Herculiner Professional Grade Spray-On Bed Liner Kit

### Top Attributes:

- Outperforms other factory and DIY bed liners in durability
- Highest scratch, impact, water & chemical resistance with the top adhesion performance.
- Textured skid-resistant finish
- Can be sprayed or rolled on; spray gun and rollers included

### Part No.

HCL2K8

### Coverage

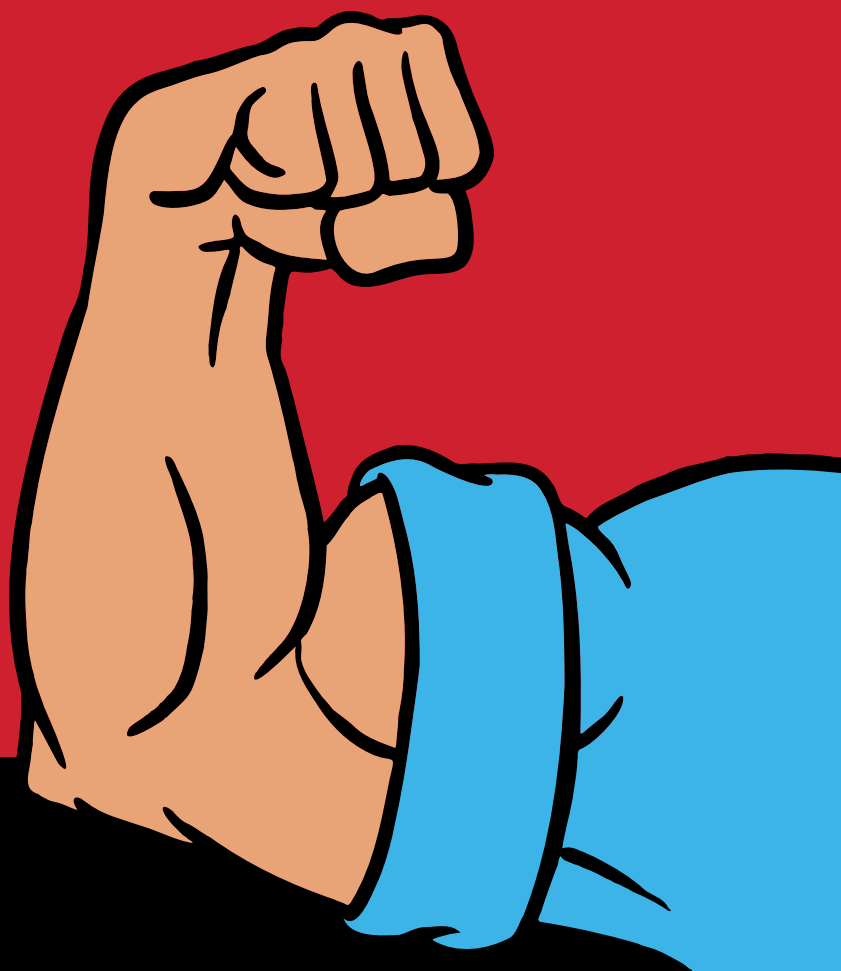
- The kit covers (1) 1.8m truck bed or 5 - 5.5m<sup>2</sup>

### Contents:

- 4 bottles of Professional Grade bed liner
- 1 bottle of hardener
- 1 spray gun
- Two rollers for rolling application
- 1 measuring cup



**Distributed by:**



**info@jbweld.com.au**